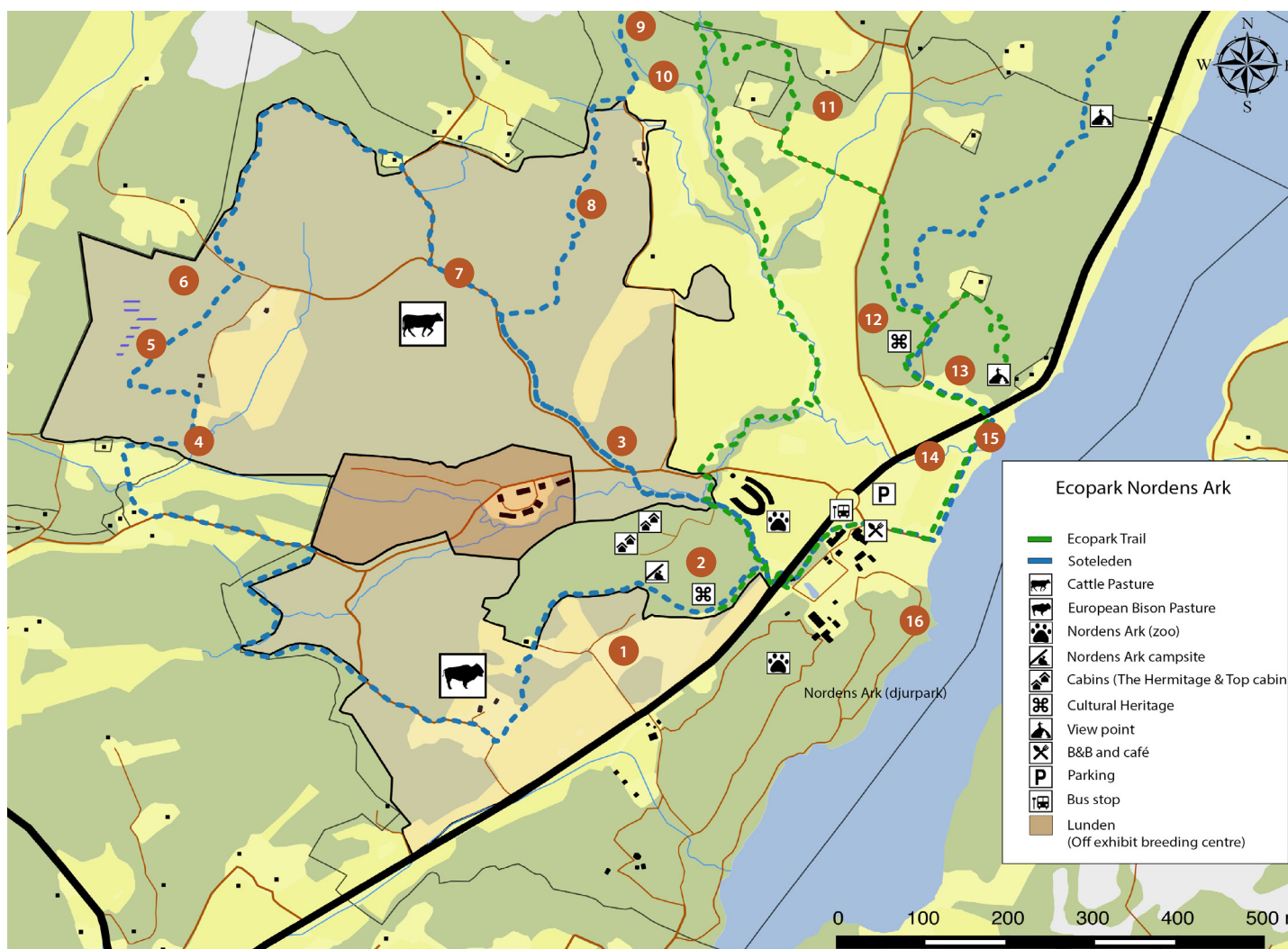


Ecopark Nordens Ark



1. **Old fields** - old-fashioned fields, visible in raking light.
2. **Åbyhällen** - famous Bronze Age rock carving.
3. **Veteranization** - an experiment to age young oaks quickly.
4. **Waterfall** - in a beautiful deciduous forest setting.
5. **Flateberget** - heath-like landscape with a fine view. Restoration using fire and grazing is ongoing.
6. **Shell bank** - liverleaf (*Hepatica*) grows here, thriving thanks to grazing.
7. **Wetland** - Grazing experiments are underway. The enclosures are part of a project on grazing, fire, and overgrowth.
8. **Fauna depot** - modern method to increase biodiversity using dead wood.

9. **Bronze age cairns** - forest-covered burial sites.
10. **Stream ravine and waterfall** - magical atmosphere and remnants of a water mill.
11. **Nordens Ark cliff** - rock face with climbing routes.
12. **Passage grave and Nycander family grave** - family burial site near a Stone Age grave known as "Glose Altar."
13. **The viewpoint** - majestic view of the fjord, Nordens Ark, and the cultural landscape. Accessibility adapted.
14. **Tree pollarding** - we are restoring the meadow and pollarding trees for leaf fodder.
15. **Shore meadow** - mowing is done to benefit flora and fauna.
16. **Steamboat jetty** - steamboats docked here until the 1950s.